



Gallus 2000 GAS METER



- Compact Size
- Pulse Output
- Fire-resistant Construction

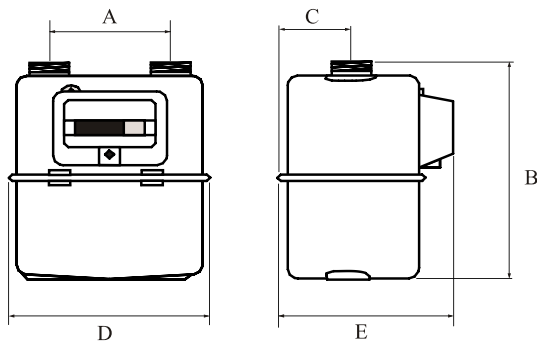
The Gallus 2000 is made to measure accurately the volumes of natural gas used for domestic appliances. The pulse generator can then send the data to required devices for volume totalization.

Technical Characteristics

Use Natural gas and LPG*
 Cyclic volume 0.42ft³
 Operating temperature -4° F to +104° C
 Storage temperature -40° F to +140° C

* please contact us for any other type of gas.

Maximum Operating Pressure 7.25 PSI
 Measuring range Qmin 1.4 ft³/h Qmax 211 ft³/h
 Pulse generator Standard 1 ft³ per pulse
 Pulse transmitter LF-system, 12 Vdc max
 10 mA max, standard 1 ft³/pulse



Meter Case Material	A in	B in	C in	D in	E in	Wt lb	Connection Threads
STEEL	4.3	8.9	2.6	7.4	6.5	3.2	3/4" NPT

Typical accuracy curve

